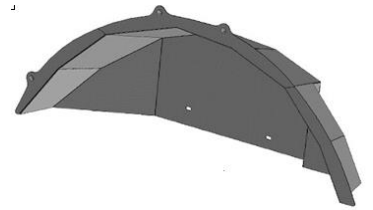




FRONT FENDER LINERS

Part No. JL05RI



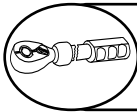
Fits: 2018-2019 JEEP WRANGLER JL 4-DOOR



REMOVE CONTENTS FROM BOX. VERIFY ALL PARTS ARE PRESENT.



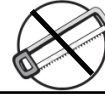
READ INSTRUCTIONS CAREFULLY BEFORE STARTING INSTALLATION.



DO NOT OVER TORQUE. STANDARD OPERATING LOAD FOR TIGHTEN BODY MOUNT NUTS & BOLTS VARIES FROM 45 TO 65 FOOT POUND.



60-180 min



Cutting Not Required



Drilling Not Required



support@trailfx.com



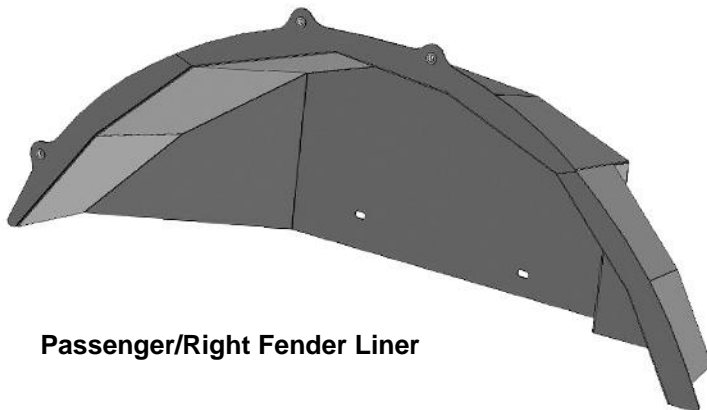
1 866 638 4870



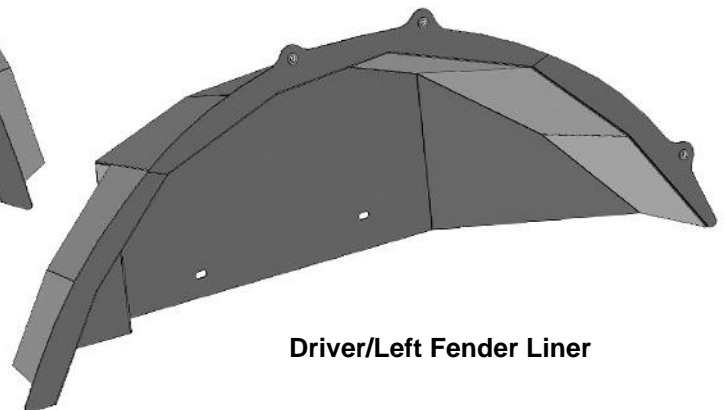
POLISHED STAINLESS STEEL – LIMITED LIFETIME
POWDER COATED BLACK – 3 YEARS

PARTS LIST:

Qty	Part Description	Qty	Part Description
1	Driver/Left Rear Fender Liner	4	6-1.0mm Clip Nuts
1	Passenger/Right Rear Fender Liner	10	6-1.0mm x 20mm Button Head Combo Bolts
		1	4mm Wrench



Passenger/Right Fender Liner



Driver/Left Fender Liner

(4) 6mm Clip-On Nut Plates



PROCEDURE:

REMOVE CONTENTS FROM BOX. VERIFY ALL PARTS ARE PRESENT. READ INSTRUCTIONS CAREFULLY. ASSISTANCE IS RECOMMENDED.

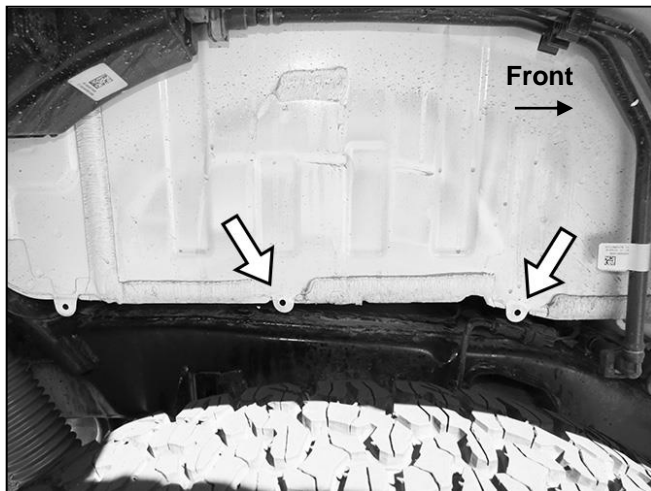
1. Start installation on the passenger/right side of the vehicle. Locate the tabs along the bottom of the body above the frame, **(Figure 1)**. **NOTE:** The plastic fender liner attached to these tabs.
2. Select (2) 6mm Clip Nuts. Slide the Clip Nuts onto the (2) forward mounting tabs, **(Figure 2)**.
3. Select the passenger/right rear Fender Liner. Insert the Fender Liner into position up to the back of the inner body panel. **IMPORTANT:** If the vehicle has aftermarket fenders previously installed, it may be necessary to temporarily remove any hardware interfering with the Fender Liners. Depending on brand of fender, the replacement rear fender may attach to the same (2) top and the single rear mounting locations, **(Figure 3)**. Use either the 6mm hardware supplied with the fender or the included 6mm

Combo Bolts if long enough. **NOTE:** It may be easier to install the Fender Liner with the vehicle raised up and/or rear tire removed. Line up the mounting holes in the Fender Liner with the back of the body panel.

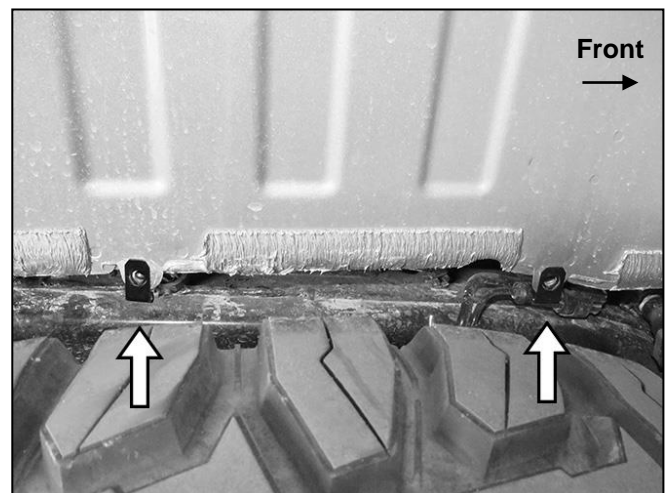
4. Attach the Fender Liner to the (2) top mounting locations with the hardware attaching the fender or (2) 6mm Combo Bolts, **(Figures 3 & 5)**. Check hardware to see if it is long enough to go through the fender and into the 6mm threaded insert in the Fender Liner. Leave hardware loose at this time
5. Attach the bottom of the Fender Liner to the (2) 6mm Clip Nuts with the included (2) 6mm Combo Bolts, **(Figures 4 & 5)**.
6. Line up the rear mounting hole with the hole in the body. Attach the Fender Liner to the rear location with (1) 6mm Combo Bolt, **(Figures 3, 5 & 6)**.
7. Align and adjust the Fender Liner. Fully tighten all hardware attaching the Fender Liner and fender.
8. Repeat **Steps 1—7** for driver/left side Fender Liner installation.
9. Do periodic inspections to the installation to make sure that all hardware is secure and tight.

To protect your investment, Do not use any type of polish or wax that may contain abrasives that could damage the finish. Mild soap may be used to clean the Fender Liners.

Passenger/right Side Installation Pictured



(Fig 1) Locate mounting location on passenger/right tire opening (arrow)



(Fig 2) Slide Clip Nuts over mounting tabs on bottom of inner body panel (arrows-passenger/right side pictured)



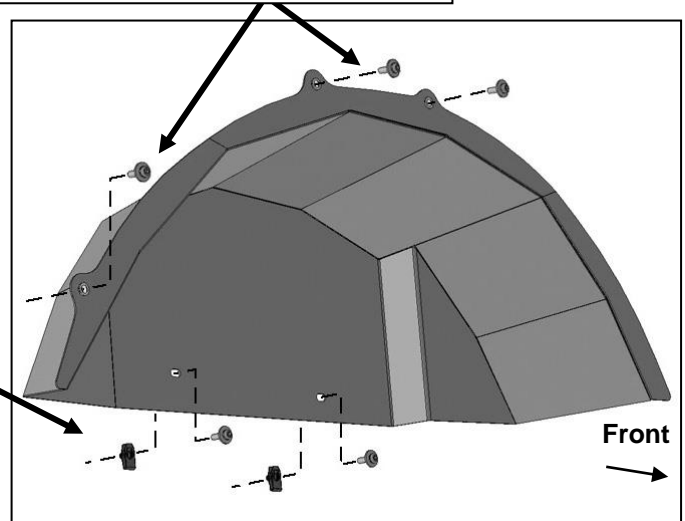
(Fig 3) Fender Liner will attach to the (3) factory locations typically used to attach aftermarket fenders (arrows). Use either the hardware supplied with the fenders (must be 6mm hardware) or the included 6mm Combo Bolts to attach the Fender Liner to these mounting points (passenger/right side pictured without fender for instruction purposes only)

Passenger/right Side Installation Pictured



(Fig 4) Attach Fender Liner to the (2) 6mm Clip Nuts with the included (2) 6mm Combo Bolts (arrows)

Reuse fender bolts or use included (3) 6mm Combo Bolts if long enough to go through fender and into liner



(2) 6mm Combo Bolts
(2) 6mm Clip Nuts

(Fig 5) Locate top mounting locations on bottom of fender supports (arrows)



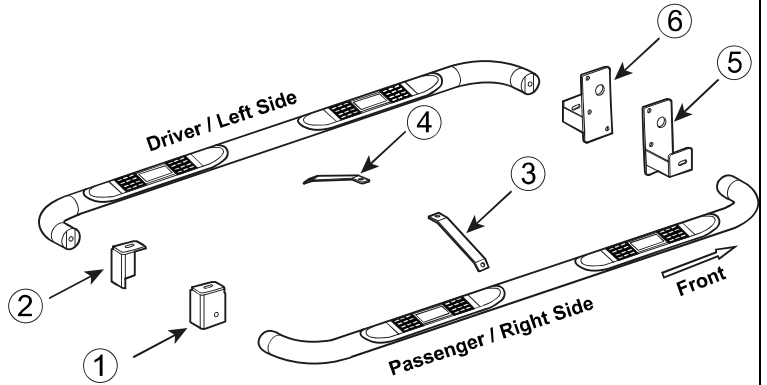
(Fig 6) Pictured with fender example for instruction purposes only

PARTS IDENTIFICATION GUIDE

Driver Side tube packed using "Green" color foam sheet. Passenger Side tube packed using "White" color foam sheet

No.	Parts Identification
1	Passenger / Right 'Rear' Bracket marked "PR"
2	Driver / Left 'Rear' Bracket marked "DR"
3	Passenger / Right 'Center' Bracket marked "PC"
4	Driver / Left 'Center' Bracket marked "DC"
5	Passenger / Right 'Front' Bracket marked "PF"
6	Driver / Left 'Front' Bracket marked "DF"

Note:
 > This guide is to identify the parts and not a reference for part count.
 > For part count, refer Parts List.
 > Product / Bracket image is representative and actual design may vary.



PRODUCT CARE

- Periodically check the product to ensure all fasteners are tight and components are intact.
- Regular waxing is recommended to protect the finish of the product.
- **Use ONLY Non-Abrasive automotive wax.** Use of any soap, polish or wax that contains an abrasive is detrimental and can scratch the finish leading to corrosion.
- Aluminum polish may be used to polish small scratches and scuffs for **Stainless Steel finish.**
- Mild soap may be used to clean the product for both **Stainless Steel and Black finish.**

FAQ's

1. Hardware's are not of correct size.

In GMC / Chevrolet truck model 2006 & up, customer needs to reuse the factory body bolts to install the bracket. If your vehicle is not GMC / Chevrolet 2006 & up, ensure that holes are not partially covered with any plastic grommet or rust? If it is, remove the plastic grommet & rust from the thread holes & re-try the installation.

2. Mounting Bracket are not getting Installed properly.

In some cases Illustration images shown in Installation manual may not be the exactly same as per actual vehicle images ,also if Driver / Passenger side mounting brackets are very identical in the design, suggest referring Parts Identification guide to avoid fitment issue.

3. Products are thumping / rattling after installation.

Ensure that all required mounting brackets / hardware's are installed & tighten correctly. Suggest using white lithium / regular grease between the metal to metal contact surfaces.

4. Side Bar is not aligning with vehicle / Step Pads are not aligning with vehicle doors.

Side bar may be interchanged or mounting brackets are not installed at the correct position in the vehicle. Refer Parts identification guide.

5. Missing / Excess Hardware.

Recheck hardware count as per the part list.

6. Product not installing properly.

Ensure make model year, cab length and bed size of your vehicle is listed in the application. All installation steps are followed correctly.

Check out these other TrailFX Products!!

www.TrailFX.com



Keystone Automotive Operations Inc. (KAO) warrants this product to be free of defects in material and workmanship at the time of purchase by the original retail consumer. KAO disclaims any other warranties, express or implied, including the warranty of fitness for a particular purpose or an intended use. If the product is found to be defective, KAO may replace or repair the product at our option, when the product is returned prepaid, with proof of purchase. Alteration to, improper installation, or misuse of this product voids the warranty. KAO's liability is limited to repair or replacement of products found to be defective, and specifically excludes liability for any incidental or consequential loss or damage.